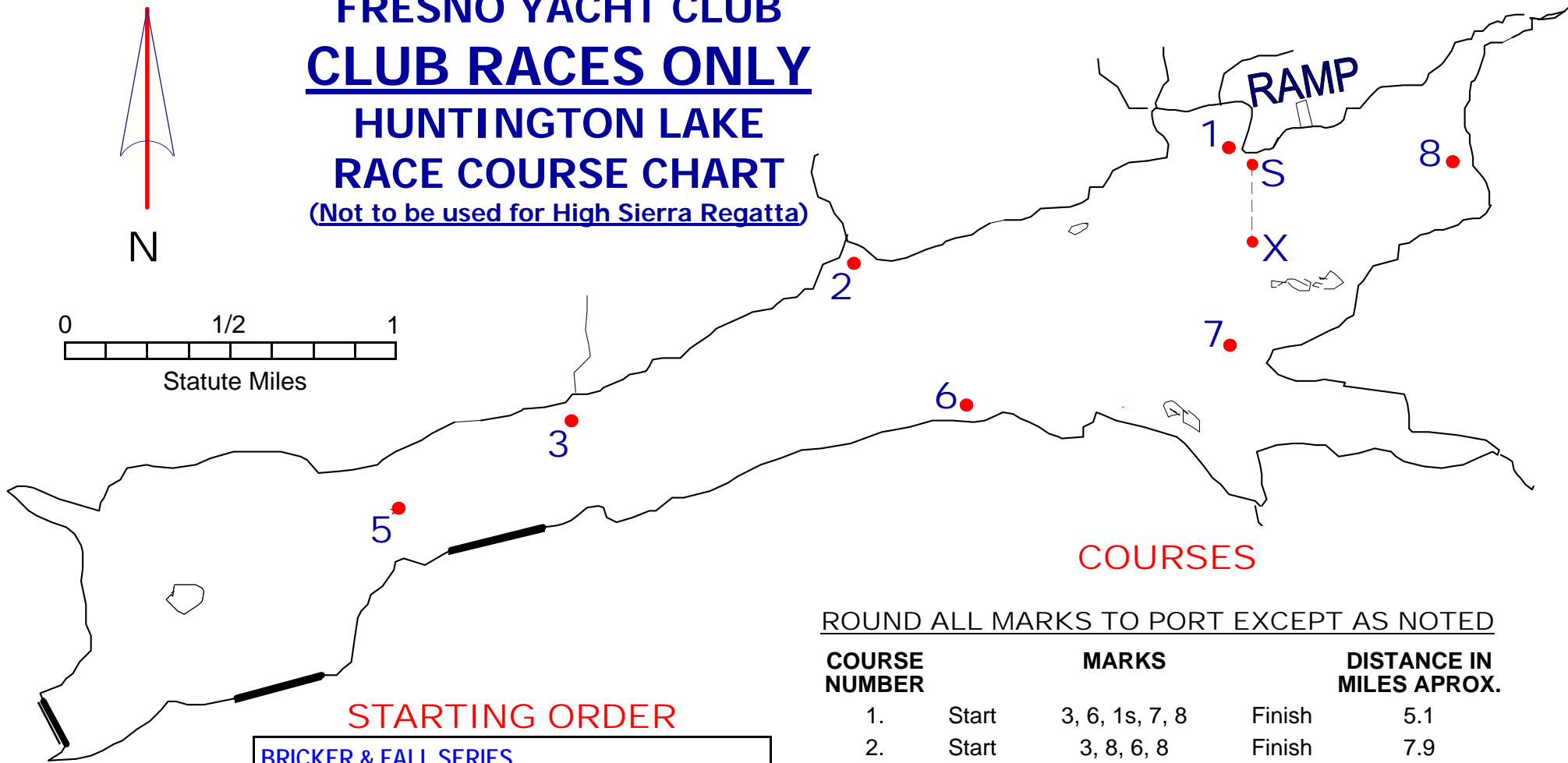
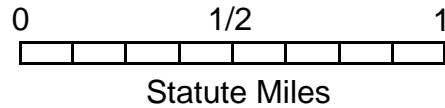
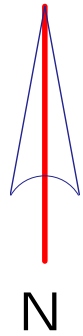


FRESNO YACHT CLUB CLUB RACES ONLY HUNTINGTON LAKE RACE COURSE CHART

(Not to be used for High Sierra Regatta)



COURSES

ROUND ALL MARKS TO PORT EXCEPT AS NOTED

COURSE NUMBER	MARKS	DISTANCE IN MILES APROX.
1.	Start 3, 6, 1s, 7, 8 Finish	5.1
2.	Start 3, 8, 6, 8 Finish	7.9
3.	Start 5, 8 Finish	5.4
4.	Start 2, 7, 8 Finish	3.2
5.	Start 2, X, 2, 7, 8 Finish	5.3
6.	Start 3, X, 2, 7, 8 Finish	6.5
7.	Start 5s, 1s, 7, 8 Finish	6.9
8.	Start 3, 8 Finish	4.3

STARTING ORDER

BRICKER & FALL SERIES	
<u>Class Flag</u>	<u>CLASSES</u>
1	OPEN MULTIHULL
2	PHRF FLEET & OPEN CLASS
3	ALL OTHER KEEL FLEETS
4	CENTERBOARD FLEETS

The Race Committee will be on shore.

The START LINE will be between an inner buoy approximately 100 feet off shore and an outer buoy or Stake Boat approximately 500 feet from the inner buoy.

The FINISH LINE will be between the inner buoy and a finish buoy approximately one third the length of the start line. The finish buoy is not part of the start line.

SAILING INSTRUCTIONS FYC 2008 CLUB RACES Huntington Lake

RULES: Races will be governed by the "Rules" as defined in the Rules of Sailing (2005-2008). This is a Category A event.

SCHEDULE OF RACES: Starting times are as published in the Main Sheet or FYC Calendar.

SAFETY: Each participant is solely responsible for his/her personal safety. However, in circumstances it considers hazardous the Race Committee (RC) may exercise authority to require a boat to accept help. US Coast Guard Approved Personal Flotation is required by the U.S. Forest Service and MUST be worn at all times while racing. A "wet suit" is not adequate flotation. Code Flag "Y" will be flown at all times by the RC. A painter or throw line of adequate length shall be carried at all times by centerboard boats.

COURSES: Courses are described on the FYC Club Race Course Chart (do not use the High Sierra Race Course Chart). The course number will be displayed at the signal pole or in close proximity thereto. Marks shall be rounded between the mark and adjacent shore.

MARKS: Marks 1, 2, 3, 5, 6, 7 & 8 are Yellow buoys. Mark X is the Buoy, which is the outer buoy of the start line.

START/FINISH LINE: The Start/Finish Line will be between an inner dark red buoy approximately 100 feet off shore and an outer dark red buoy approximately 500 feet from the inner buoy. Boats not racing shall keep clear of the Starting Line and its extensions. The Finish Line will be approximately 1/3 the length of the start line between the inner dark red buoy and an outer inflatable Round Red Buoy. The finish buoy is not part of the starting line.

CLASS FLAGS: RRS 26 is modified, replacing the term "class flag" with the term "group class flag" for classes starting together as a group. A group class may consist of one or more classes a listed in the starting order described on the FYC Club Race Course Chart. The starting order will not be deviated from. Numeric signal flags will designate group classes.

STARTING: The Race Committee will be on shore. Races will be started using RRS 26 with the warning signal given five(5) minutes before the starting signal. Starting order will not deviate, but starts may be eliminated. Boats whose warning signal has not been made shall avoid the starting area. The Start Line will be between an inner red buoy "S" approximately 100 feet off shore and an outer dark red buoy "X" approximately 500 feet from the inner buoy.

INDIVIDUAL AND GENERAL RECALLS: Individual recalls will be in accordance with Racing Rules 29.2. The responsibility for proper start lies with the competitor. When a general recall has been signaled, a new preparatory signal for the class recalled will be made 5 minutes after the recalled start. When a general recall has been signaled, the starts for the succeeding classes will be postponed accordingly. The next class will start five minutes after the previous class has started properly.

MULTIPLE RACES SAME DAY: The Warning Signal for the subsequent race of the day will be made approximately 10 minutes after the last boat finishes the previous race. The last finisher will be signaled by two long sound signals and lowering the Blue Shape.

PROTESTS: Protest shall be lodged with committee at the registration tent not later than 30 minutes after the last boat finished the last race of the day. Protests will be heard immediately following the deadline for filing. Sail numbers of boats involved will be posted at the tent. Failure on the part of any involved party, or their representative, to make an effort to attend the hearing may justify the Protest Committee to decide the outcome without a full hearing.

SCORING: If three (3) races are scheduled of which one (1) must be completed to constitute a series. Each boat's score shall be the total of her race scores. No race will be excluded. The Low Point System, Appendix A of the Racing Rules will apply.

EQUIPMENT: All One-Design classes shall be equipped as required by Class Rules. Anchor requirement waived.

TO BE USED FOR FYC CLUB RACES ONLY!
NOT HIGH SIERRA REGATTA