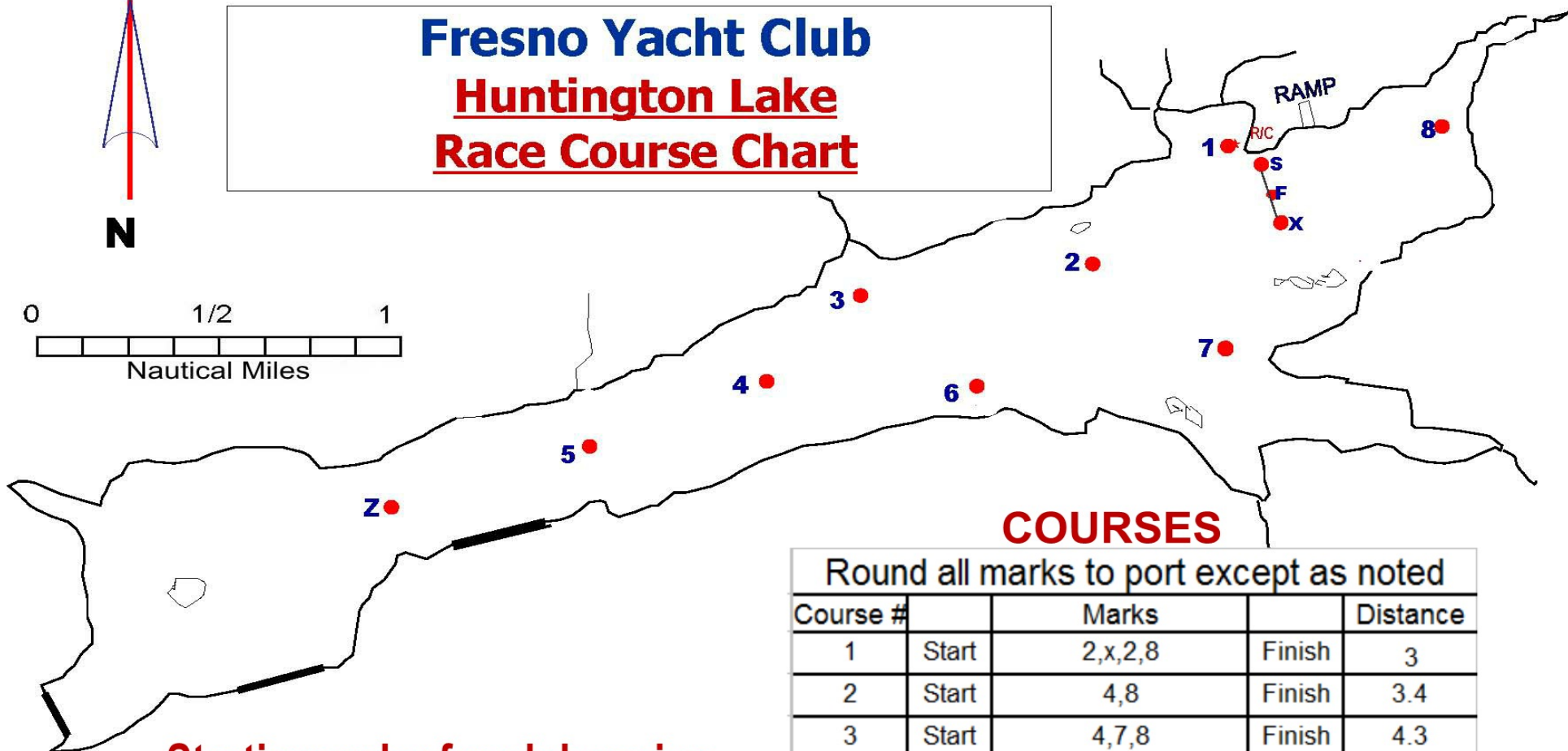
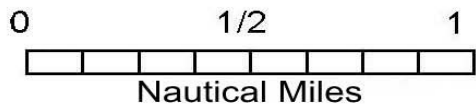
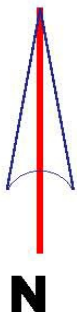


Fresno Yacht Club Huntington Lake Race Course Chart



COURSES

Round all marks to port except as noted

Course #	Start	Marks	Finish	Distance
1	Start	2,x,2,8	Finish	3
2	Start	4,8	Finish	3.4
3	Start	4,7,8	Finish	4.3
4	Start	4,6,1s,7,8	Finish	4.9
5	Start	4,x,2,8	Finish	5
6	Start	Z,8	Finish	5.6
7	Start	5,6,1s,7,8	Finish	5.8
8	Start	5,3s,6,1s,7,8	Finish	6
9	Start	5,x,4,8	Finish	7.5
10	Start	8,2	Finish	2

Round all marks between the mark and the adjacent shore

Starting order for club racing

Class flag	Classes
1	PHRF, Centerboard & Other
2	San Juan 21.

Do not use for High Sierra Regatta

The race committee will be on shore.

The START LINE will be between an inner buoy "S" approximately 50 ft. off shore and an outer buoy "X" approximately 300 ft. from the inner buoy.

The FINISH LINE will be between "S" and a finish buoy "F". The START and FINISH lines are not restricted.